

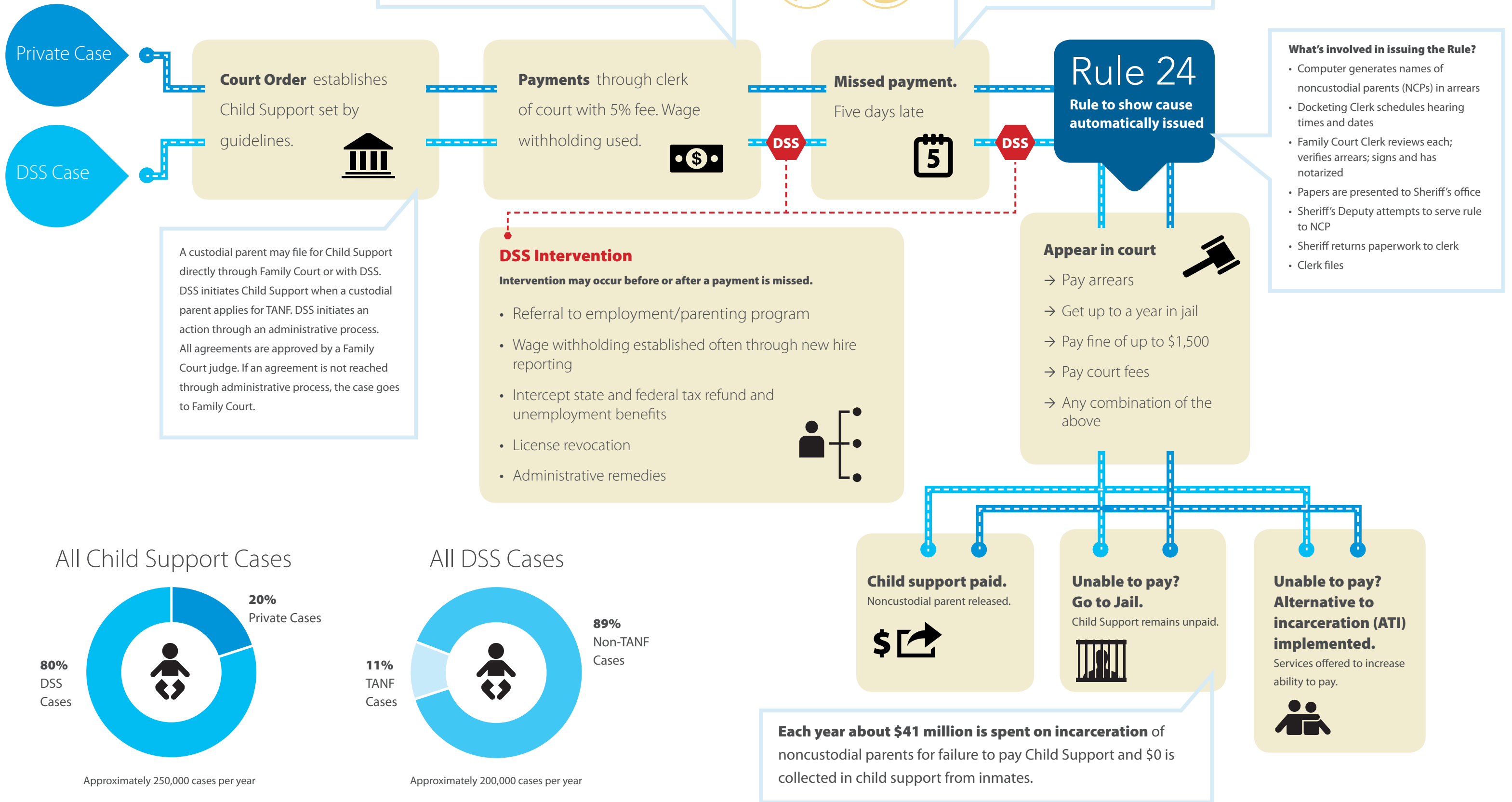
# Child Support

One in every four children in South Carolina is touched by the child support system. **Here's what it looks like.**



# Child Support

## The SC guide



# Key to Consistent, Cost-Effective Child Support Collections

## Employment

Referrals to proven employment assistance opportunities for unemployed or underemployed noncustodial parents (NCPs).



## Wage Withholding

Collaborative initiative between DSS and Clerks of Court to initiate wage withholding quickly. As a result, Child Support collections have steadily increased over last 3 years.



## Intervention

DSS can initiate stronger enforcement remedies, to include court actions against NCPs who are able to pay but unwilling.

## Two ways to get Child Support paid.

**Is there a more cost-effective way to get the job done  
than to go through a contempt action in court?**

### Contempt Action:

- Automated rules
- Cost to serve rules through Sheriff's office
- Cost of DSS staff to attend court
- Lost time and possible wages of NCP and lost productivity for NCP employer
- Cost of judges and court personnel
- Diversion of dollars from Child Support to pay court fines/fees (*These payments do not go to help the child*)
- Incarceration



**Goal:**  
**Child Support**

### Parent Accountability:

- South Carolina's policies and practices favoring less expensive, and equally or more effective, interventions.
- Referral to employment/parenting program
  - Wage withholding established often through new hire reporting
  - Intercept state and federal tax refund and unemployment benefits
  - License revocation
  - Administrative remedies
- Court should be an option, but a last resort.*